

IF YOU MUST USE YOUR HAIR DRYER IN THE BATHROOM, INSTALL A GFCI*NOW!

Your local electrician can help you decide which type is best for you—a portable unit that plugs into the electrical outlet or a permanent unit installed by your electrician. The National Electrical Code now requires GFCI's in the bathrooms, garages, and outdoor outlets of all new homes.



WHY DO YOU NEED A GFCI? Electricity and water don't mix. If your hair dryer falls into water while it's plugged in, the electric shock can kill you...even if the switch is "off." A regular fuse or circuit breaker won't protect you under these circumstances. A GFCI offers you far greater protection.

A GFCI can save your life! Compared to that, the price is small! Don't wait...install one now!

*GFCI is a sensitive device which reacts immediately to a small electric current leak by stopping the electricity flow.

USER MAINTENANCE

Your dryer is virtually maintenance-free. No lubrication is needed. For proper operating performance, the dryer must be kept clean. When cleaning is needed, unplug the cord, and clean dust and lint from air intake openings with a small brush or the brush attachment of a vacuum cleaner. The outer surface of the dryer should be wiped clean with a cloth only.

Blocked or clogged air intake vents will cause the dryer to overheat. If overheating occurs, an automatic safety device will shut the dryer or the heat off to prevent damage or personal injury. If the unit or the heat cycles off, unplug the cord and allow the dryer to cool for 10 to 15 minutes before restarting. Make sure the air vents are clean.

CAUTION

NEVER allow the power supply cord to be pulled, twisted, or severely bent. Never wrap the cord tightly around the dryer. Damage will occur at the high flex point of entry into the dryer, causing it to rupture and short. Inspect the cord frequently for damage. **Stop use immediately if damage is visible or unit stops or operates intermittently.**

If the cord or dryer is damaged or does not operate properly, return it for repair to an authorized Conair service representative only. No repairs should be attempted by the consumer.

STORAGE - Important

When not in use, your dryer should be disconnected and stored in a safe, dry location, out of reach of children. **Do not wrap line cord around dryer.** Allow the cord to hang or lie loose and straight at the point of entry into the dryer.

LIMITED FOUR YEAR WARRANTY

Conair will repair or replace, at our option, your appliance free of charge for 48 months from the date of purchase if the appliance is defective in workmanship or materials.

To obtain service under this warranty, return the defective product to the service centre listed below together with your sales slip and \$7.50 for postage and handling. In the absence of a receipt, the warranty period shall be 48 months from the date of manufacture.

ANY IMPLIED WARRANTIES, OBLIGATIONS, OR LIABILITIES, INCLUDING BUT NOT LIMITED TO THE IMPLIED WARRANTY OF MERCHANTABILITY AND FITNESS FOR A PARTICULAR PURPOSE, SHALL BE LIMITED IN DURATION TO THE 48 MONTH DURATION OF THIS WARRANTY.

IN NO EVENT SHALL CONAIR BE LIABLE FOR ANY SPECIAL, INCIDENTAL, OR CONSEQUENTIAL DAMAGES FOR BREACH OF THIS OR ANY OTHER WARRANTY, EXPRESS OR IMPLIED, WHATSOEVER.

This warranty gives you specific legal rights, and you may also have other rights which vary from province to province.

SERVICE CENTRE:
CONAIR CONSUMER PRODUCTS ULC
100 Conair Parkway
Woodbridge Ontario, L4H 0L2
©2019 CONAIR CONSUMER PRODUCTS ULC

For more information on any Conair product call:
1-855-926-6247
Visit our Web site: www.conaircanada.ca
Consumer Call Centre E-mail:
Consumer_Canada@Conair.com

19CN034473

IB-16284



1875 Watt Rose Gold AC Motor Dryer



Have a Question?

Please do not return this product to the retailer.

Call Us First!

Our customer service and product experts are ready to answer ALL your questions.

Please call our TOLL-FREE customer service number at: 1-855-926-6247 or visit us online at www.conaircanada.ca

Instruction & Styling Guide
Model 251RGC

This message about...

GROUND

FAULT

CIRCUIT

INTERRUPTERS

...can save a life!

IMPORTANT SAFETY INSTRUCTIONS

When using electrical appliances, especially when children are present, basic safety precautions should always be followed, including the following:

READ ALL INSTRUCTIONS BEFORE USING KEEP AWAY FROM WATER

DANGER — Any hair dryer is electrically live even when the switch is off. To reduce the risk of death or injury by electric shock:

1. Always “unplug it” immediately after using.
2. Do not use while bathing or in a shower.
3. Do not place or store appliance where it can fall or be pulled into a tub or sink.
4. Do not place in, or drop into, water or other liquid.
5. If an appliance falls into water, “unplug it” immediately. Do not reach into the water.

WARNING— To reduce the risk of burns, electrocution, fire, or injury to persons:

1. This appliance should never be left unattended when plugged in.
2. This appliance should not be used by, on, or near children or individuals with certain disabilities.
3. Use this appliance only for its intended use as described in this manual. Do not use attachments not recommended by the manufacturer.
4. Never operate this appliance if it has a damaged cord or plug, if it is not

working properly, if it has been dropped, damaged, or dropped into water. Return the appliance to a Conair Service Centre for examination and repair.

5. Keep the cord away from heated surfaces. Do not pull, twist, or wrap line cord around dryer, even during storage.
6. Never block the air openings of the appliance or place it on a soft surface, such as a bed or couch, where the air openings may be blocked. Keep the air openings free of lint, hair, and the like.
7. Never use while sleeping.
8. Never drop or insert any object into any opening or hose.
9. Do not use outdoors or operate where aerosol (spray) products are being used or where oxygen is being administered.
10. Do not use an extension cord to operate dryer.
11. Do not direct hot air toward eyes or other heat-sensitive areas.
12. Attachments may be hot during use. Allow them to cool before handling.
13. Do not place appliance on any surface while it is operating.
14. While using the appliance, keep your hair out of it. Keep your hair away from the air inlets.
15. Do not use with voltage converter.
16. This appliance is not a toy. Keep away from children.

SAVE THESE INSTRUCTIONS

OPERATING INSTRUCTIONS

This appliance is intended for household use only. Use on Alternating Current (60 hertz) only. Standard Dryers are designed to operate at 110 to 125 volts A.C.

This appliance has a polarized plug (one blade is wider than the other). As a safety feature, this plug will fit in a polarized outlet only one way. If the plug does not fit fully in the outlet, reverse the plug. If it still does not fit, contact a qualified electrician. Do not attempt to defeat this safety feature.

IMPORTANT

1875 WATTS OPERATING GUIDE

Use of this dryer on the same circuit or fuse with other electrical products or appliances may trip a 15 amp circuit breaker or blow a 15 amp fuse. NEVER replace the fuse with one rated higher than the capacity of the circuit. Doing so could result in an electrical fire.

SUPER STYLING GUIDE

Your best looks begin with a good haircut that’s well maintained. Always treat hair right with superior quality shampoos, conditioners, and finishing products.

DRYING BASICS

1. Shampoo and condition hair with products of your choice. Rinse thoroughly. Towel blot hair to remove excess moisture. Section hair. Using the dryer along with your styling

brush, start at a lower setting and direct hot air through a section of hair at a time. Move dryer steadily across each section so that the hot air passes through hair. Direct air flow at hair not scalp.

2. Keep dryer’s air intake vents unobstructed and free from hair while drying.
3. To avoid over drying, do not concentrate heat on any one section for any length of time. Keep dryer moving as you style.
4. For quick touchups between shampoos, mist hair to dampen it before styling with dryer.
5. When using your dryer to create curls and waves, dry hair almost completely on a low temperature setting, then set your style by switching to the cool setting for a perfect finish.

GETTING TO KNOW YOUR DRYER

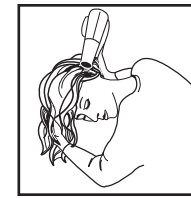
The Conair® Tourmaline Ceramic Dryer is very effective, even at lower temperatures, and helps make hair healthier-looking, shiny, more manageable hair.

TOURMALINE CERAMIC TECHNOLOGY

will keep your hair healthy and shiny. It generates full spectrum, infrared heat and ions which work on hair molecules to dry them inside and out. This drying process is gentle and quick; it minimizes heat damage and makes hair less frizzy and more manageable.

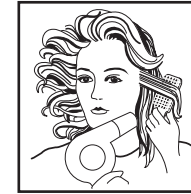
BODY & VOLUME

To create extra volume, turn head upside down while drying. Position the air flow toward the roots for maximum lift. When hair is dry, toss head back and brush hair into place.



STRAIGHTENING

Work with hair in sections when creating a super straight look. Using a large round brush (approximately 2” diameter), hold hair taut in each section and bend ends slightly under as you dry.

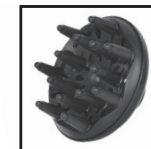


MAKING WAVES

Tousled, natural looking waves are easily created by grasping hair at the roots and scrunching between fingertips while drying.



Concentrator



Finger Diffuser